

A teal robot head with a glowing blue visor, set against a blurred background of a futuristic city with neon lights.

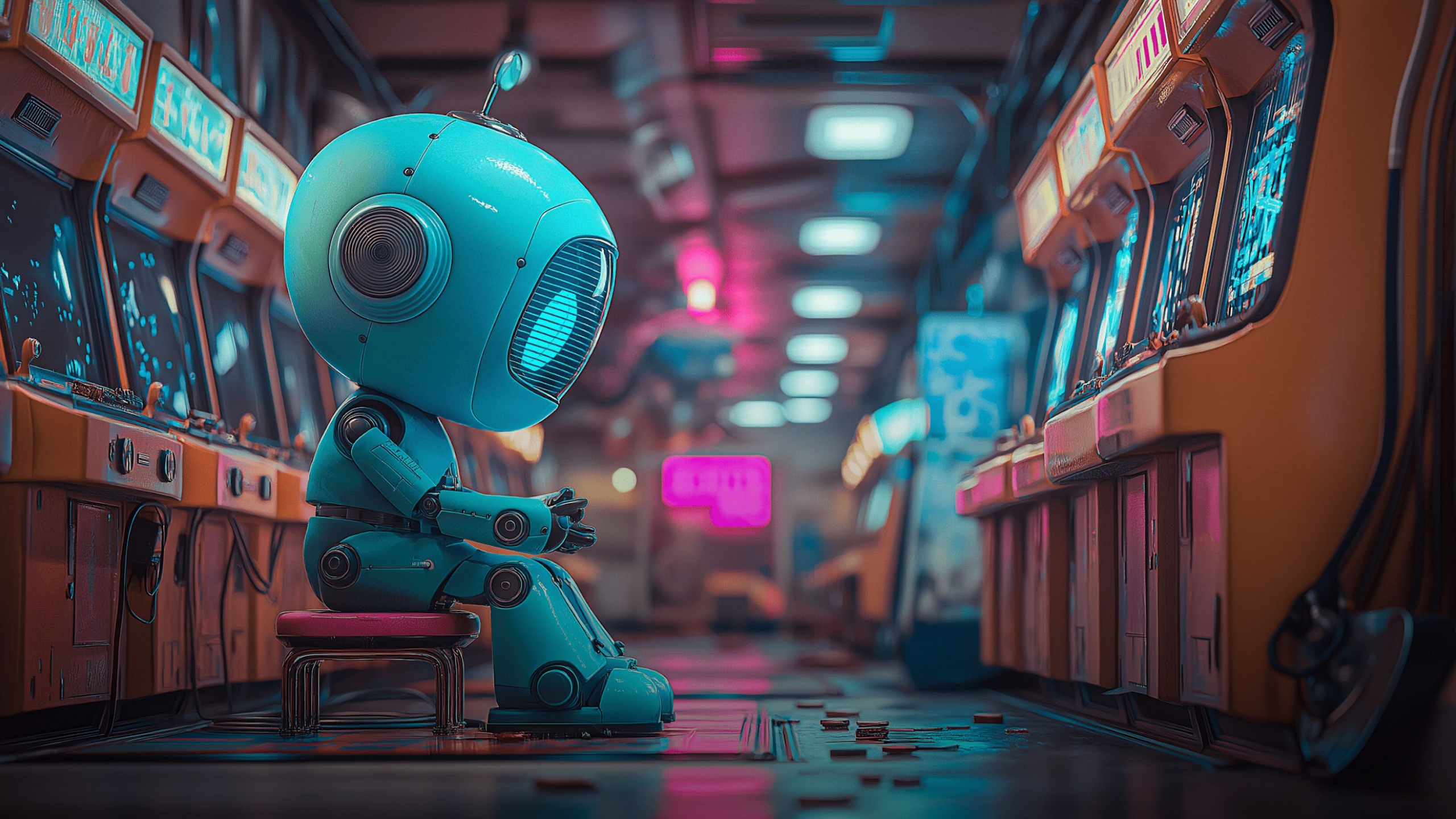
Security & Privacy

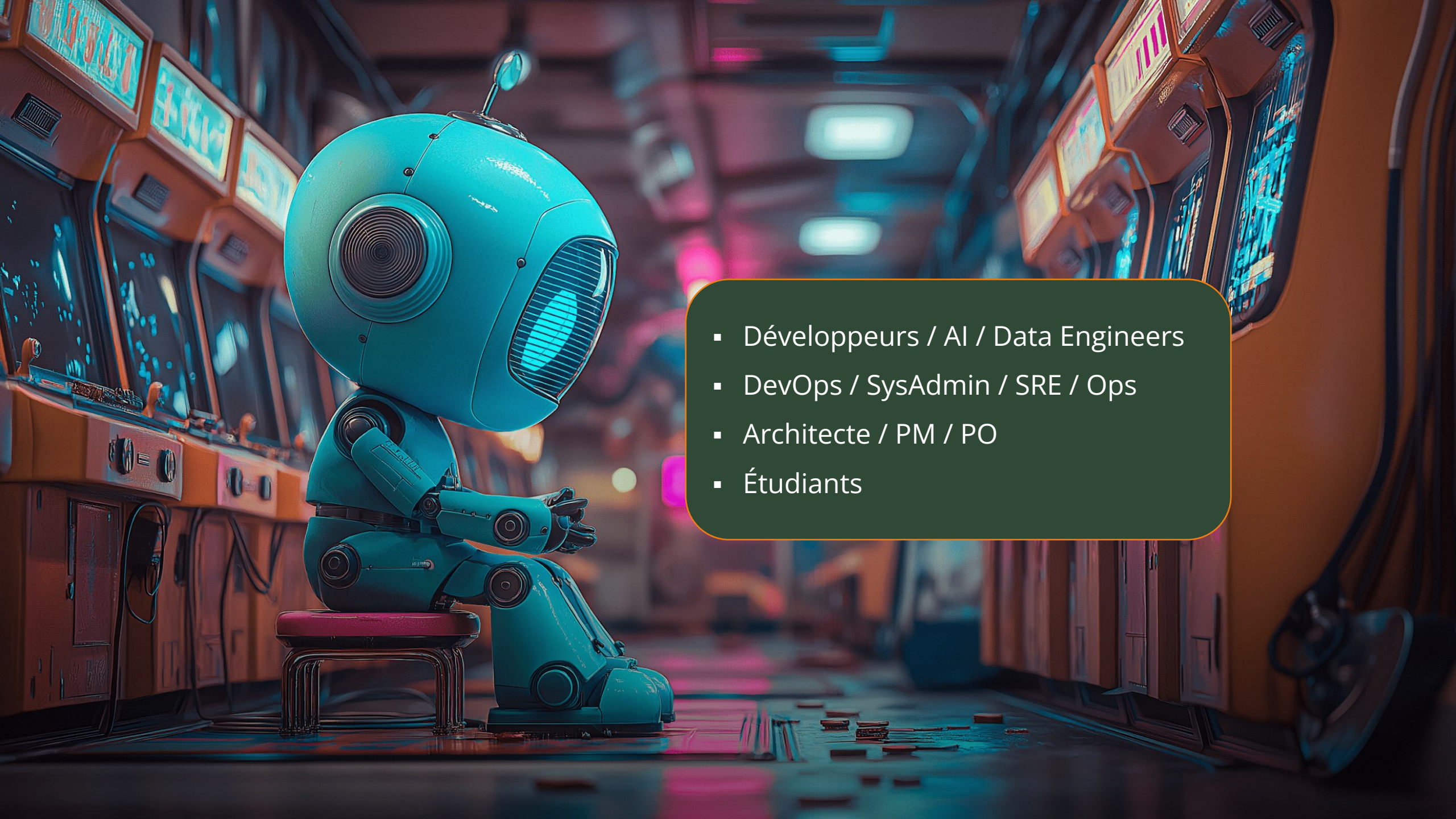
# SÉCURISEZ VOS PROTOTYPES AVEC OAUTH2-PROXY ET ANUBIS



DAVID APARICIO

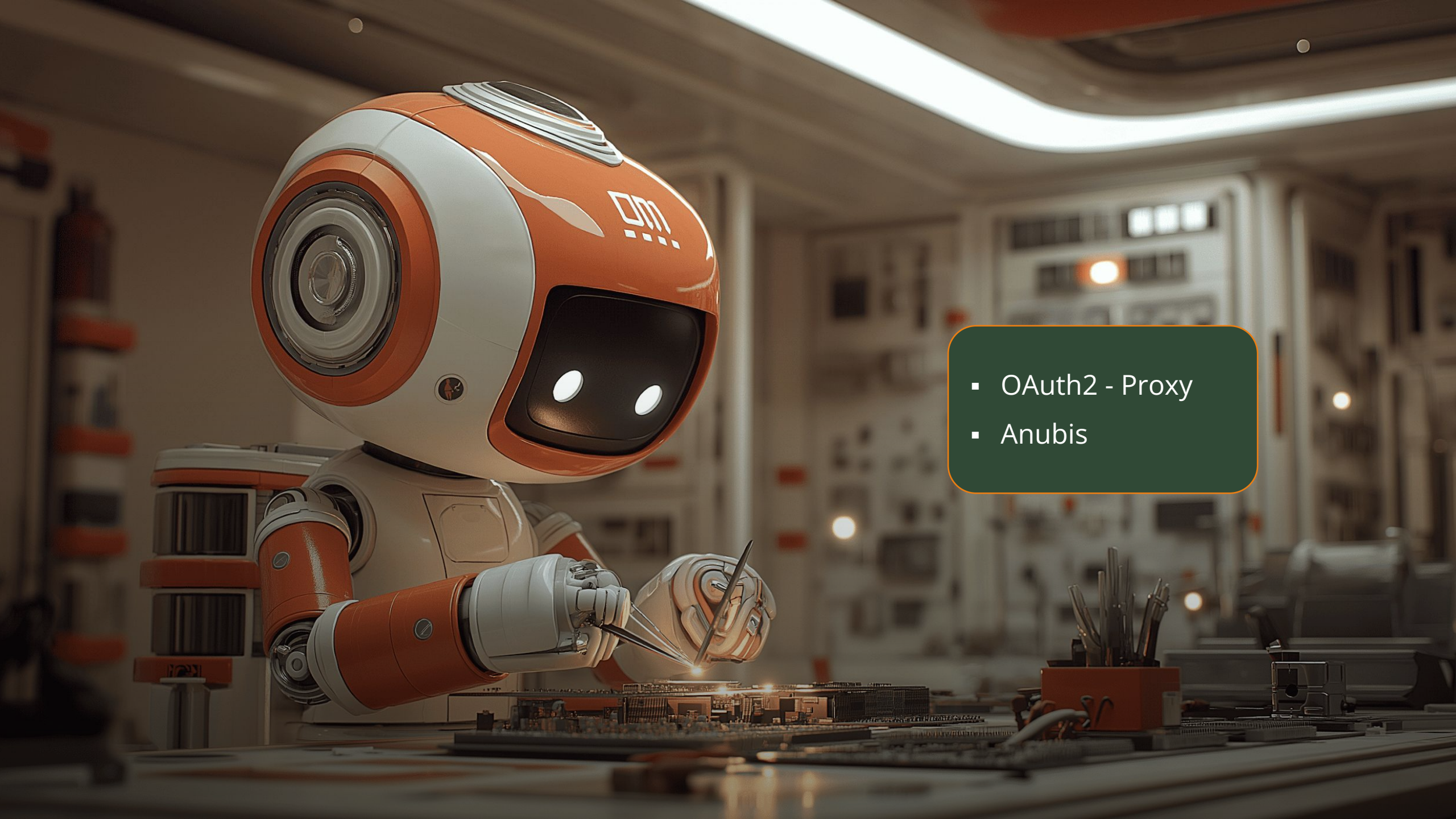
EUDONET





- Développeurs / AI / Data Engineers
- DevOps / SysAdmin / SRE / Ops
- Architecte / PM / PO
- Étudiants



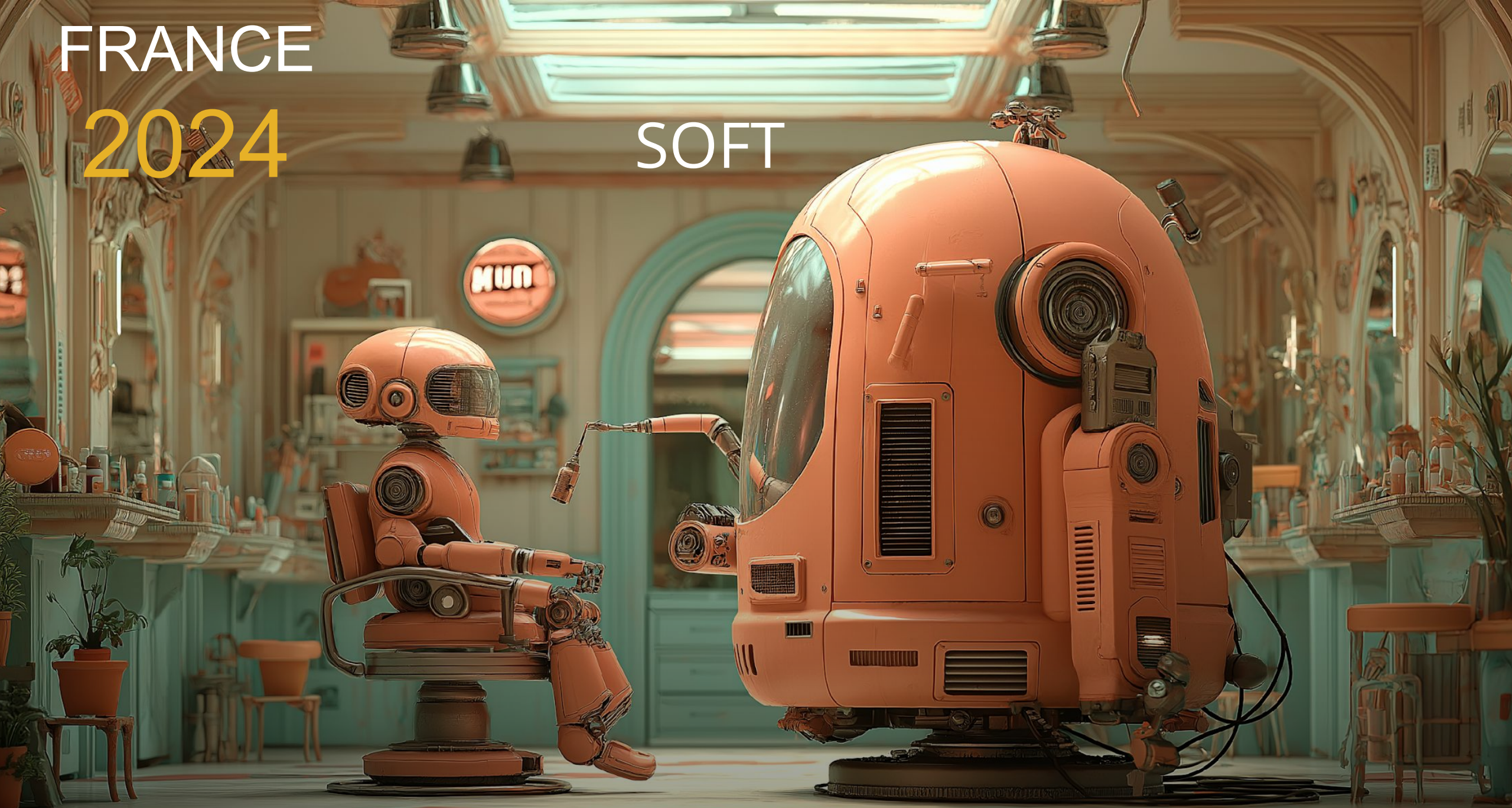


- OAuth2 - Proxy
- Anubis

FRANCE

2024

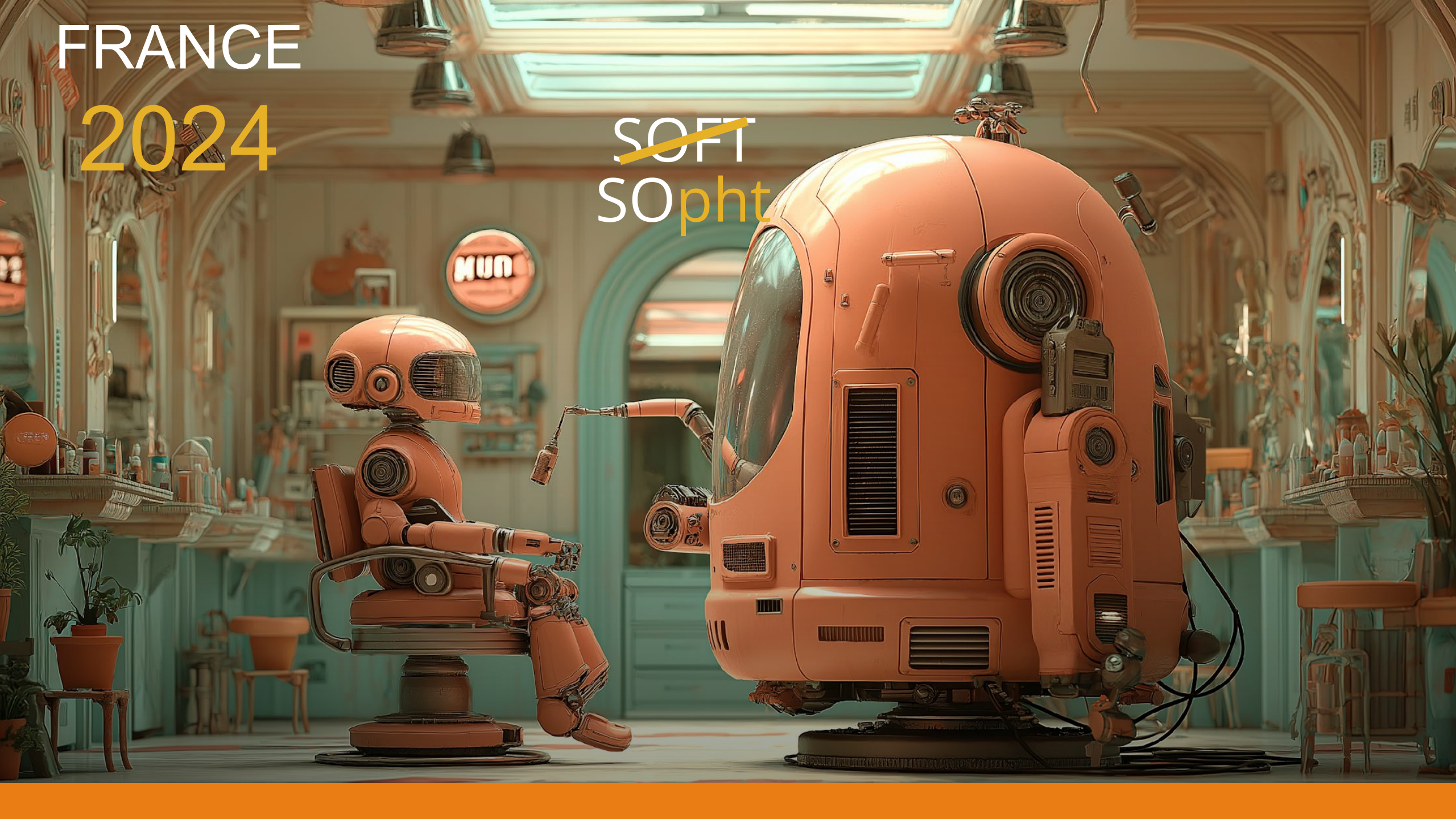
SOFT



FRANCE

2024

~~SOFT~~  
SOphT



# FRANCE 2024

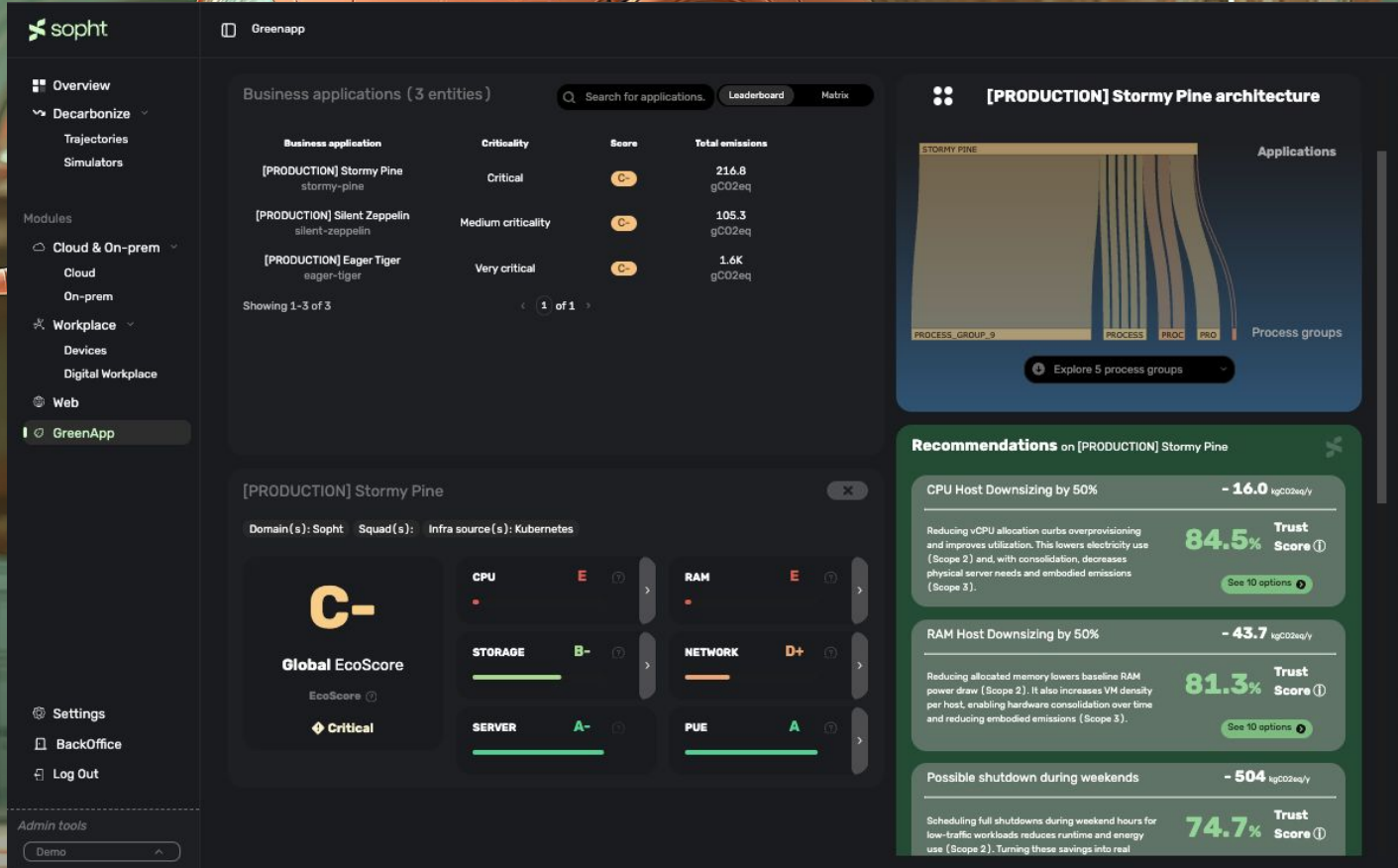
~~SOFT~~  
SOphT



# FRANCE 2024

~~SOFT~~  
SOphT

 Retool



**sopht** Greenapp

Overview

- Decarbonize
  - Trajectories
  - Simulators
- Modules
  - Cloud & On-prem
    - Cloud
    - On-prem
  - Workplace
    - Devices
    - Digital Workplace
  - Web
    - GreenApp
- Settings
- BackOffice
- Log Out

Admin tools: Demo

Business applications (3 entities)

Business application	Criticality	Score	Total emissions
[PRODUCTION] Stormy Pine stormy-pine	Critical	C-	214.8 gCO2eq
[PRODUCTION] Silent Zeppelin silent-zeppelin	Medium criticality	C-	105.3 gCO2eq
[PRODUCTION] Eager Tiger eager-tiger	Very critical	C-	1.6K gCO2eq

Showing 1-3 of 3 (1 of 1)

[PRODUCTION] Stormy Pine

Domain(s): Sopht Squad(s): Infra source(s): Kubernetes

**C-** Global EcoScore

EcoScore ⓘ

⚡ Critical

CPU	E	RAM	E
STORAGE	B-	NETWORK	D+
SERVER	A-	PUE	A

[PRODUCTION] Stormy Pine architecture

STORMY PINE Applications

PROCESS GROUP 9 PROCESS PROC PRO Process groups

Explore 5 process groups

Recommendations on [PRODUCTION] Stormy Pine

- CPU Host Downsizing by 50% - 16.0 kgCO2eq/y  
Trust Score ⓘ 84.5%  
Reducing vCPU allocation curbs overprovisioning and improves utilization. This lowers electricity use (Scope 2) and, with consolidation, decreases physical server needs and embodied emissions (Scope 3).  
See 10 options ⓘ
- RAM Host Downsizing by 50% - 43.7 kgCO2eq/y  
Trust Score ⓘ 81.3%  
Reducing allocated memory lowers baseline RAM power draw (Scope 2). It also increases VM density per host, enabling hardware consolidation over time and reducing embodied emissions (Scope 3).  
See 10 options ⓘ
- Possible shutdown during weekends - 504 kgCO2eq/y  
Trust Score ⓘ 74.7%  
Scheduling full shutdowns during weekend hours for low-traffic workloads reduces runtime and energy use (Scope 2). Turning these savings into real

# FRANCE 2024

~~SOFT~~  
SOphT

 Streamlit



**sopht** Global / Web / Web

### Web Monitoring

**Audit Coverage** 72 / 439 pages

**Audited Pages Emissions** 1.2 tCO<sub>2</sub>eq

**Projected Pages Emissions** 7.3 tCO<sub>2</sub>eq

**Efficiency** Energy usage score provided by Webvrt

< 0.1	A
< 0.2	B
< 0.4	C
< 0.8	D
< 1.5	E
< 3	F
>= 3	G

0.42 kWh/page pour 10k visites

**Performance** Performance score provided by PageSpeed

**63%** Global Performance

Desktop : 85%

Mobile : 45%

**Usage**

**382 MB** Cumulated Bandwidth

**5.17 minutes** Cumulated Loading Time

### Webspaces Breakdown

WebSpace	Efficiency	Perf.
solutions	1.33 kWh/page	64 %
blog	2.72 kWh/page	86 %
impact	2.01 kWh/page	15 %
innovation	1.72 kWh/page	62 %
products	1.26 kWh/page	82 %
news	1.20 kWh/page	94 %
impact	1.64 kWh/page	96 %
news	0.52 kWh/page	66 %

Settings Log Out



/ SECURITY GUIDE

# Summary Plan

- 1 / LE PROBLÈME
- 2 / LE PROTOCOLE
- 3 / OAUTH2-PROXY
- 4 / LIVE DEMO
- 5 / LES DIFFICULTÉS
- 6 / ANUBIS
- 7 / LIVE DEMO
- 8 / CONCLUSION
  
- 9 / Q&A



# OAuth2 quèsaco

À quel problème répond-il ?



/ OAUTH2 - LE PROBLÈME

# Facebook

## Dans un temps, pas si lointain...

Step 1  
Find Your Friends

### Are your friends already on Facebook?

Many of your friends may already be here. Searching your email account is the fastest way to find your friends on Facebook. [See how it works.](#)



Outlook.com (Hotmail)

Find Friends



AOL

Find Friends



Comcast

Find Friends



Other Email Service

Please enter a valid username and password

Your Email

Email Password

Find Friends

Facebook won't store your password.

Next

©Facebook



Facebook stores your contact list for you so that we can help you reach more people and connect friends. [Learn more.](#)

.. les problèmes sont vites arrivés

### Confirm Your Email

To continue using Facebook, you'll need to confirm your email. Since you signed up with **fakemanjenkins@yandex.com**, you can do that automatically through yandex.com.

Your Email **fakemanjenkins@yandex.com**

Email Password

🔒 Facebook won't store your password.

[Need Help?](#)

[Update Contact Info](#)

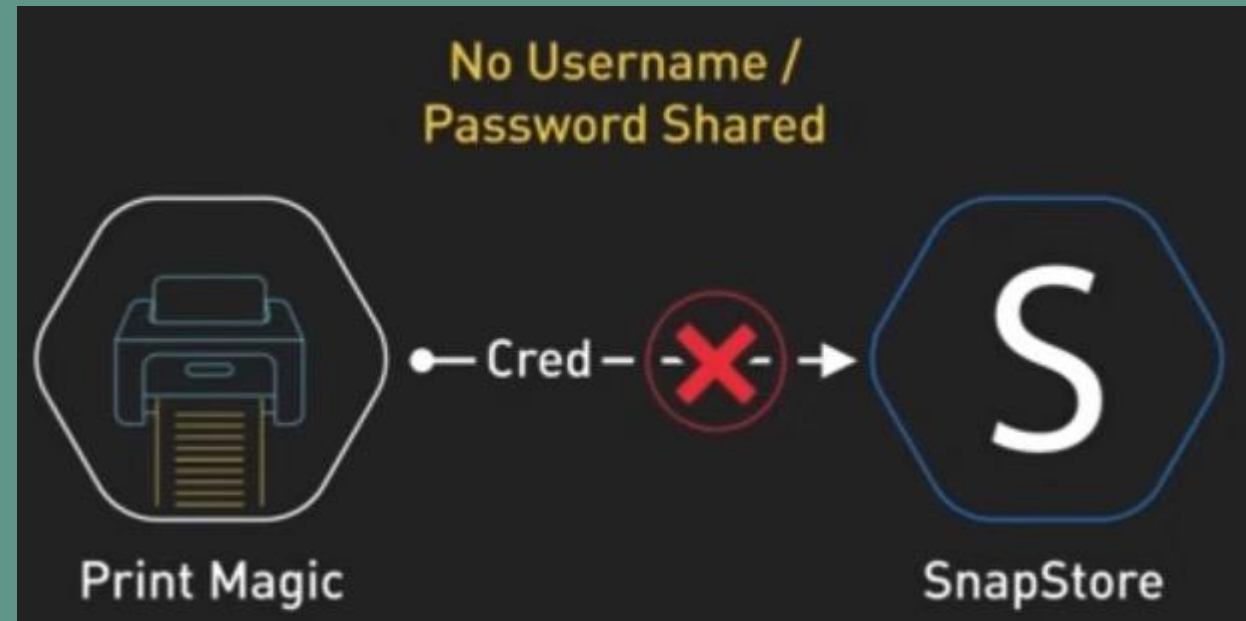
[Connect to yandex.com](#)

/ OAUTH2 - LE PROBLÈME

# Phishing

©EFF.org

# Comment se connecter alors ?




©ByteByteGo

/ OAUTH2 - LE PROBLÈME

## Objectif

# La naissance du protocole

 [datatracker.ietf.org/doc/html/rfc6749](https://datatracker.ietf.org/doc/html/rfc6749)

Internet Engineering Task Force (IETF)  
Request for Comments: 6749  
Obsoletes: [5849](#)  
Category: Standards Track  
ISSN: 2070-1721

D. Hardt, Ed.  
Microsoft  
October 2012

## The OAuth 2.0 Authorization Framework

### Abstract

The OAuth 2.0 authorization framework enables a third-party application to obtain limited access to an HTTP service, either on behalf of a resource owner by orchestrating an approval interaction between the resource owner and the HTTP service, or by allowing the third-party application to obtain access on its own behalf. This specification replaces and obsoletes the OAuth 1.0 protocol described in [RFC 5849](#).

/ OAUTH2 - LE PROTOCOLE

# RFC 6749

# Tout un vocabulaire

OAuth 2.0 Explained In Plain English

ByteByteGo.com



/ OAUTH2 - LE PROTOCOLE

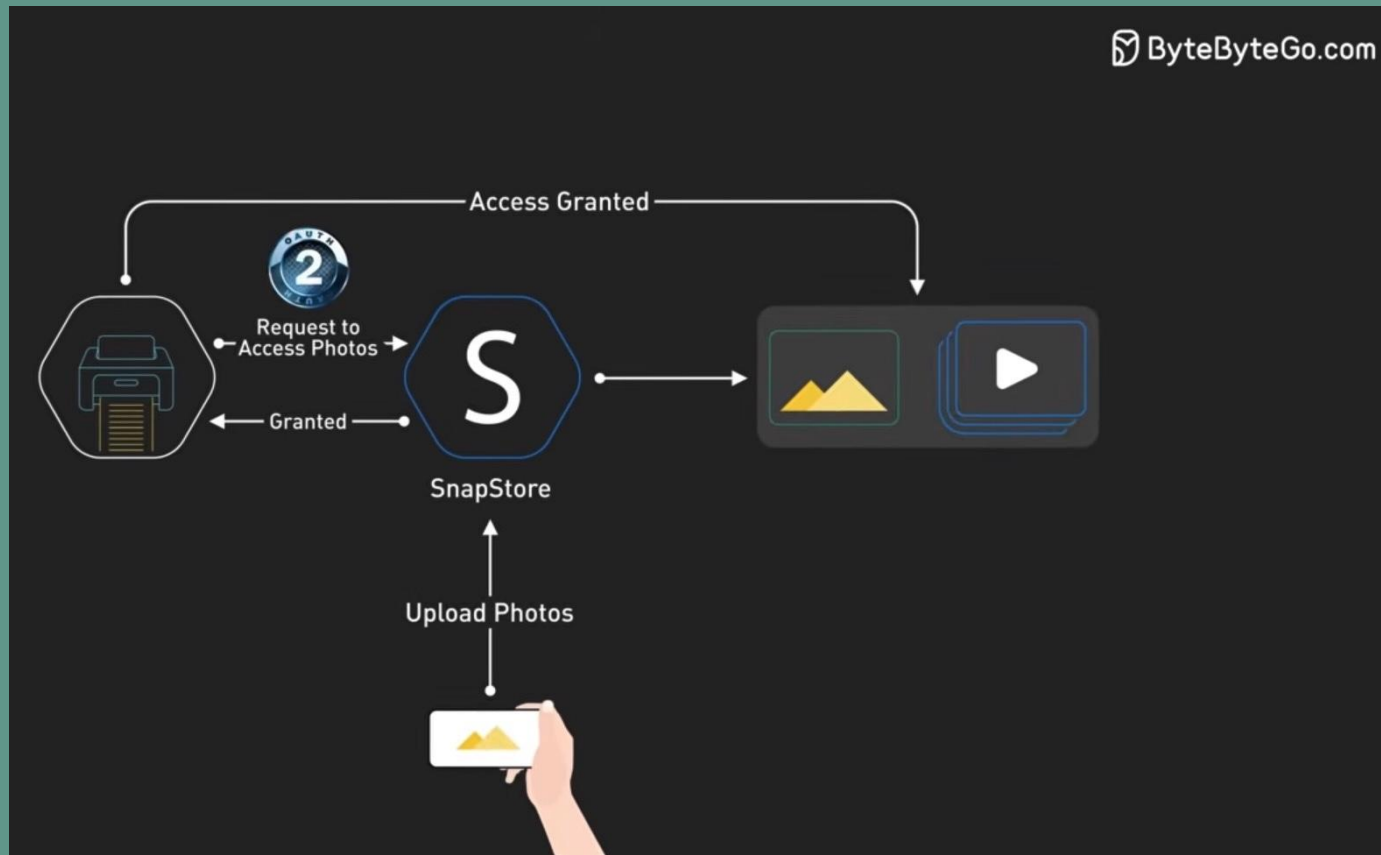
## Language



/ OAUTH2 - LE PROTOCOLE

# Architecture

## Exemple





/ OAUTH2 - LE PROTOCOLE

# VIDÉO

## OAUTH 2.1 expliqué simplement (même si tu n'es pas dev) !

**OAUTH 2.1 expliqué simplement (même si tu n'es pas dev) ! (Julien Topçu)**

Devoxx France videos  
39.3K subscribers

24K views 3 years ago PARIS

Pour rester informé sur l'actualité de Devoxx France, suivez nous sur twitter : [/ devoxxfr](https://twitter.com/devoxxfr) ou consultez notre site web <https://www.devoxx.fr/>

Il est très difficile aujourd'hui de déployer une application sur le web sans se frotter à OAuth2. Conçu pour mieux protéger les utilisateurs et les utilisatrices, ce standard de délégation d'autorisation s'est totalement im...

438 likes, Share, Save, Clip

From your search, From the series

I But What is OAuth 2 Really About? 4:32

OAuth 2 Explained In Simple Terms  
ByteByteGo  
753K views · 2 years ago

Trump : un président sain d'esprit ?



/ OAUTH2-PROXY

# Historique

- Créé par Bitly / Décembre 2012
- Protocole [OIDC](#) (OpenID Connect)
- Proxy
- Intégration facile

☆ 14.2k stars  
👁 93 watching  
🔗 2.1k forks  
Report repository

Releases 41

📦 v7.15.2 **Latest**  
last week

+ 40 releases



/ OAUTH2-PROXY

# Historique

☰ bitly / oauth2\_proxy 🔍 📁 👤

Code Issues **146** Pull requests **97** Actions More ▾


This repository was archived by the owner on Jan 24, 2019. It is now read-only.

## Commits

🔗 master ▾ 👤 All users ▾ 📅 All time ▾

🔗 Commits on Dec 11, 2012

**initial import** c6f07d5 📄 <>

 jehiah committed on Dec 11, 2012

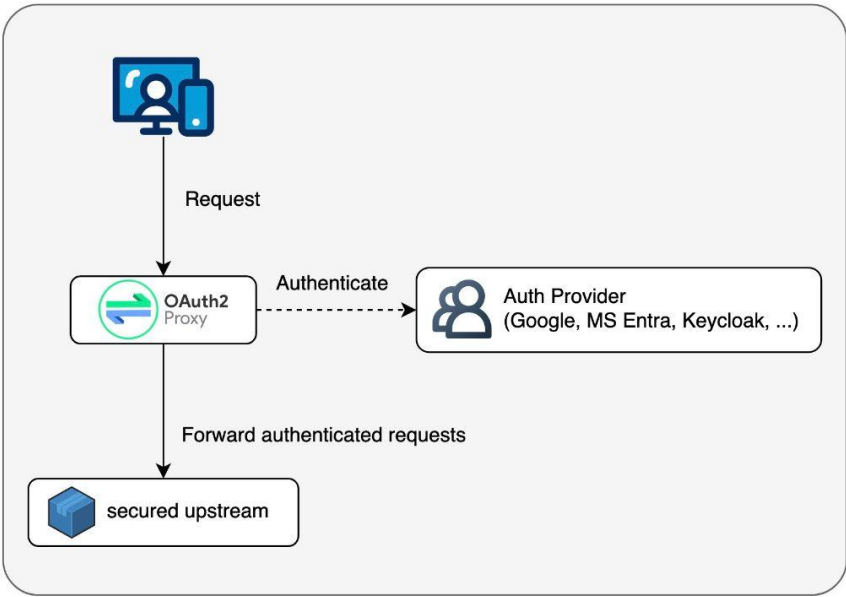
[< Previous](#) [Next >](#)



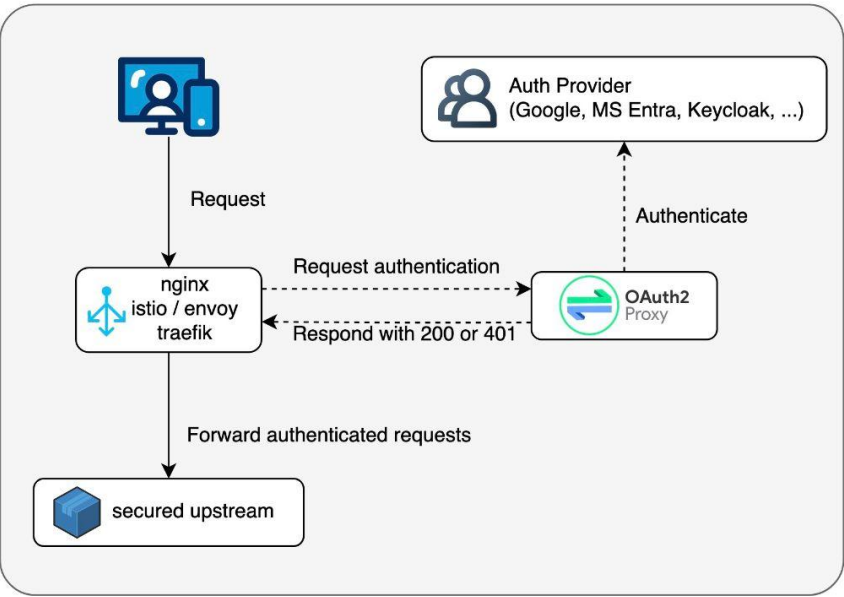
/ OAUTH2-PROXY

# Proxy

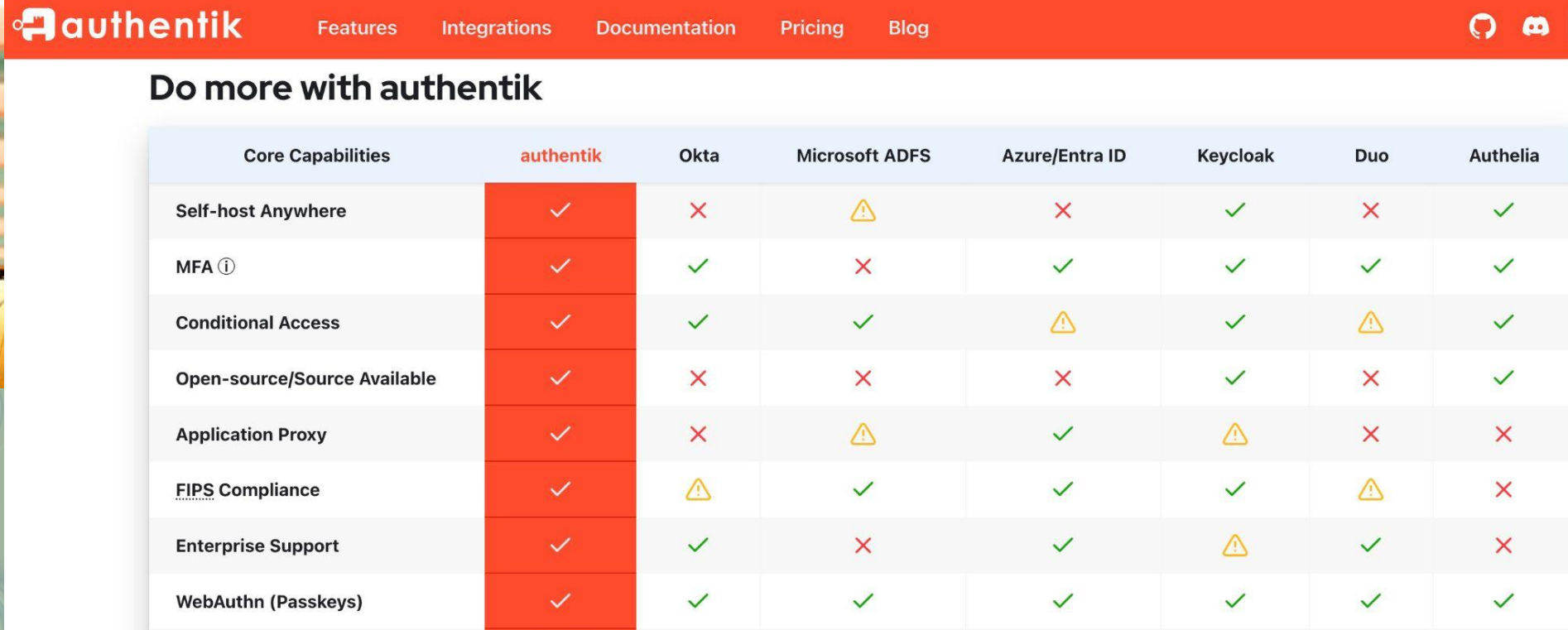
## OAuth2 Proxy as a standalone reverse-proxy



## OAuth2 Proxy as a authentication middleware



# Pourquoi Keycloak ?



The screenshot shows the Authentik website's navigation bar with links for Features, Integrations, Documentation, Pricing, and Blog. Below the navigation is a section titled "Do more with authentik" containing a comparison table. The table lists various core capabilities and compares their availability in Authentik, Okta, Microsoft ADFS, Azure/Entra ID, Keycloak, Duo, and Authelia. Authentik is consistently marked with a checkmark (✓) for all listed capabilities.

Core Capabilities	authentik	Okta	Microsoft ADFS	Azure/Entra ID	Keycloak	Duo	Authelia
Self-host Anywhere	✓	✗	⚠	✗	✓	✗	✓
MFA ⓘ	✓	✓	✗	✓	✓	✓	✓
Conditional Access	✓	✓	✓	⚠	✓	⚠	✓
Open-source/Source Available	✓	✗	✗	✗	✓	✗	✓
Application Proxy	✓	✗	⚠	✓	⚠	✗	✗
FIPS Compliance	✓	⚠	✓	✓	✓	⚠	✗
Enterprise Support	✓	✓	✗	✓	⚠	✓	✗
WebAuthn (Passkeys)	✓	✓	✓	✓	✓	✓	✓

/KEYCLOAK

## Concurrency

# Claude Opus 4.8 — Benchmark Comparison

Opus 4.8 sets a new frontier across agentic coding, reasoning, and tool use — outperforming Opus 4.7, GPT-5.4, Gemini 3.1 Pro, and Mythos Preview.

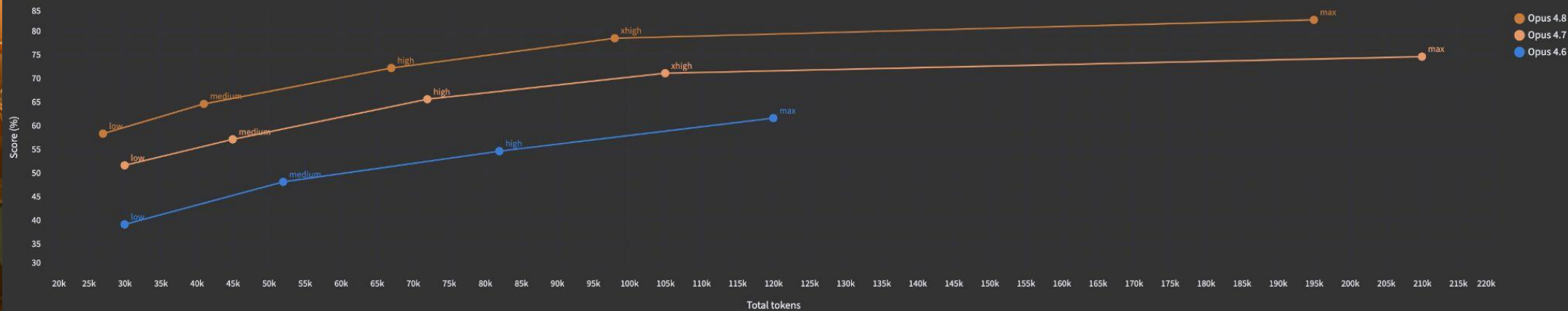
**CONFIDENTIEL**

**à sécuriser !!**

Capability	Benchmark	Opus 4.8	Opus 4.7	Opus 4.6	GPT-5.4	Gemini 3.1 Pro	Mythos Preview
Agentic coding	SWE-bench Pro	71.2%	64.3%	53.4%	57.7%	54.2%	55.5%
Agentic coding	SWE-bench Verified	92.4%	87.6%	80.8%	—	80.6%	93.9%
Agentic terminal coding	Terminal-Bench 2.0	77.8%	69.4%	65.4%	61.1%	58.5%	62.0%
Multidisciplinary reasoning	Humanity's Last Exam (no tools)	53.1%	46.9%	40.0%	47.7%	44.4%	56.8%
Multidisciplinary reasoning	Humanity's Last Exam (with tools)	62.4%	54.7%	53.3%	58.7%	53.0%	64.7%
Agentic search	BrowseComp	88.2%	79.3%	83.7%	89.3%	85.9%	86.9%
Scaled tool use	MCP-Atlas	82.5%	77.3%	75.8%	68.1%	73.9%	—
Agentic computer use	OSWorld-Verified	83.1%	78.0%	72.7%	75.0%	—	79.6%
Agentic financial analysis	Finance Agent v1.1	70.2%	64.4%	60.1%	61.5%	59.7%	—
Cybersecurity vulnerability reproduction	CyberGym	81.6%	73.1%	73.8%	66.3%	—	83.1%

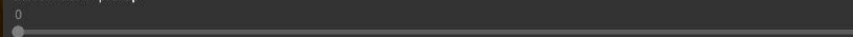
## Agentic coding performance by effort level

Anthropic internal autonomous agentic coding evaluation



## Applying Claude Opus 4.8 to NYC Uber Optimization

Select hour of pickup



Examining how Uber pickups vary over time in New York City's and at its major regional airports. By sliding the slider on the left you can view different slices of time and explore different transportation trends.

All New York City from 0:00 and 1:00

La Guardia Airport

JFK Airport

Newark Airport

DEMO TIME



KEYCLOAK



OAuth2  
Proxy

## Users

Users are the users in the current realm. [Learn more](#)

User list

Default search  Search user    1-2

<input type="checkbox"/>	Username	Email	Last name	First name
<input type="checkbox"/>	demo	<span>!</span> demo@example.com	User	Demo
<input type="checkbox"/>	demo2	<span>!</span> demo2@example.com	Beta User	Demo2

< Groups > Group details

## beta-users

Child groups

Members

Attributes

Include sub-group users

<input type="checkbox"/>	Name	Email
<input type="checkbox"/>	demo2	demo2@example.com

- streamlit **Current realm**
- Manage realms
- Manage
- Clients**
- Client scopes
- Realm roles
- Users
- Groups
- Sessions
- Events
- Configure
- Realm settings
- Authentication
- Identity providers
- User federation

# oauth2-proxy OpenID Connect

Clients are applications and services that can request authentication of a user.

- Settings**
- Keys
- Credentials
- Roles
- Client scopes
- Sessions
- Advanced
- Events

## General settings

**Client ID \*** ?

**Name** ?

**Description** ?

**Always display in UI** ?  Off

## Access settings

**Root URL** ?

**Home URL** ?

**Valid redirect URIs** ?   
[+ Add valid redirect URIs](#)

**Valid post logout redirect URIs** ?   
[+ Add valid post logout redirect URIs](#)

**Web origins** ?

- streamlit **Current realm**
- Manage realms
- Manage
  - Clients
  - Client scopes
  - Realm roles
  - Users
  - Groups
  - Sessions
  - Events
- Configure
  - Realm settings
  - Authentication
  - Identity providers
  - User federation

Clients > Client details

# oauth2-proxy

OpenID Connect

Clients are applications and services that can request authentication

- Settings
- Keys
- Credentials**
- Roles
- Client

**Client Authenticator**

**Client Secret**



apiVersion: networking.k8s.io/v1

kind: Ingress

metadata:

name: streamlit

annotations:

nginx.ingress.kubernetes.io/ssl-redirect: "true"

cert-manager.io/cluster-issuer: "selfsigned-issuer"

spec:

ingressClassName: nginx

tls:

- hosts: streamlit.127.0.0.1.nip.io

secretName: streamlit-tls

rules:

- host: streamlit.127.0.0.1.nip.io

http:

paths:

- path: /

pathType: Prefix

backend:

service:

name: streamlit

port:

number: 80



```
apiVersion: networking.k8s.io/v1
```

```
kind: Ingress
```

```
metadata:
```

```
  name: streamlit
```

```
  annotations:
```

```
    nginx.ingress.kubernetes.io/ssl-redirect: "true"
```

```
    cert-manager.io/cluster-issuer: "selfsigned-issuer"
```

```
    nginx.ingress.kubernetes.io/auth-url:
```

```
      "http://oauth2-proxy.oauth2-proxy.svc.cluster.local/oauth2/auth"
```

```
    nginx.ingress.kubernetes.io/auth-signin:
```

```
      "https://streamlit.127.0.0.1.nip.io:30443/oauth2/start?rd=$escaped_request_uri"
```

```
spec:
```

```
  ingressClassName: nginx
```

```
[...]
```



```
apiVersion: kyverno.io/v1
```

```
kind: ClusterPolicy
```

```
metadata:
```

```
  name: add-oauth2-proxy-auth
```

```
  annotations:
```

```
    +
```

```
    policies.kyverno.io/title: Add OAuth2 Proxy Authentication
```

```
    policies.kyverno.io/category: Security
```

```
    policies.kyverno.io/description: >-
```

```
    Automatically adds oauth2-proxy authentication annotations to EVERY Ingress  
    resources in the default namespace.
```

```
spec:
```

```
  rules:
```

```
    - name: add-oauth2-annotations
```

```
      match:
```

```
        any:
```



```
[...] - resources:
```

```
  kinds:
```

```
    - Ingress
```

```
  namespaces:
```

```
    - default
```

```
    selector:
```

```
      matchLabels:
```

```
        oauth2-proxy: enabled
```

```
  mutate:
```

```
    patchStrategicMerge:
```

```
      metadata:
```

```
        annotations:
```

```
          nginx.ingress.kubernetes.io/auth-url:
```

```
"http://oauth2-proxy.oauth2-proxy.svc.cluster.local/oauth2/auth"
```

```
          nginx.ingress.kubernetes.io/auth-signin:
```

```
"https://streamlit.127.0.0.1.nip.io:30443/oauth2/start?rd=$escaped_request_uri"
```



```
apiVersion: kyverno.io/v1
```

```
kind: ClusterPolicy
```

```
metadata:
```

```
  name: add-oauth2-proxy-auth
```

```
  annotations:
```

```
    +
```

```
    policies.kyverno.io/title: Add OAuth2 Proxy Authentication
```

```
    policies.kyverno.io/category: Security
```

```
    policies.kyverno.io/description: >-
```

```
    Automatically adds oauth2-proxy authentication annotations to Ingress
    resources in the default namespace that have the label 'oauth2-proxy: enabled'.
```

```
spec:
```

```
  rules:
```

```
    - name: add-oauth2-annotations
```

```
      match:
```

```
        any:
```



```
[...] - resources:
```

```
  kinds:
```

```
    - Ingress
```

```
  namespaces:
```

```
    - default
```

```
  selector:
```

```
    +
```

```
    matchLabels:
```

```
      oauth2-proxy: enabled
```

```
  mutate:
```

```
    patchStrategicMerge:
```

```
      metadata:
```

```
        annotations:
```

```
          nginx.ingress.kubernetes.io/auth-url:
```

```
"http://oauth2-proxy.oauth2-proxy.svc.cluster.local/oauth2/auth"
```

```
          nginx.ingress.kubernetes.io/auth-signin:
```

```
"https://streamlit.127.0.0.1.nip.io:30443/oauth2/start?rd=$escaped_request_uri"
```



```
apiVersion: networking.k8s.io/v1
```

```
kind: Ingress
```

```
metadata:
```

```
  name: streamlit
```

```
  labels:
```

```
    oauth2-proxy: enabled
```

```
+
```

```
  annotations:
```

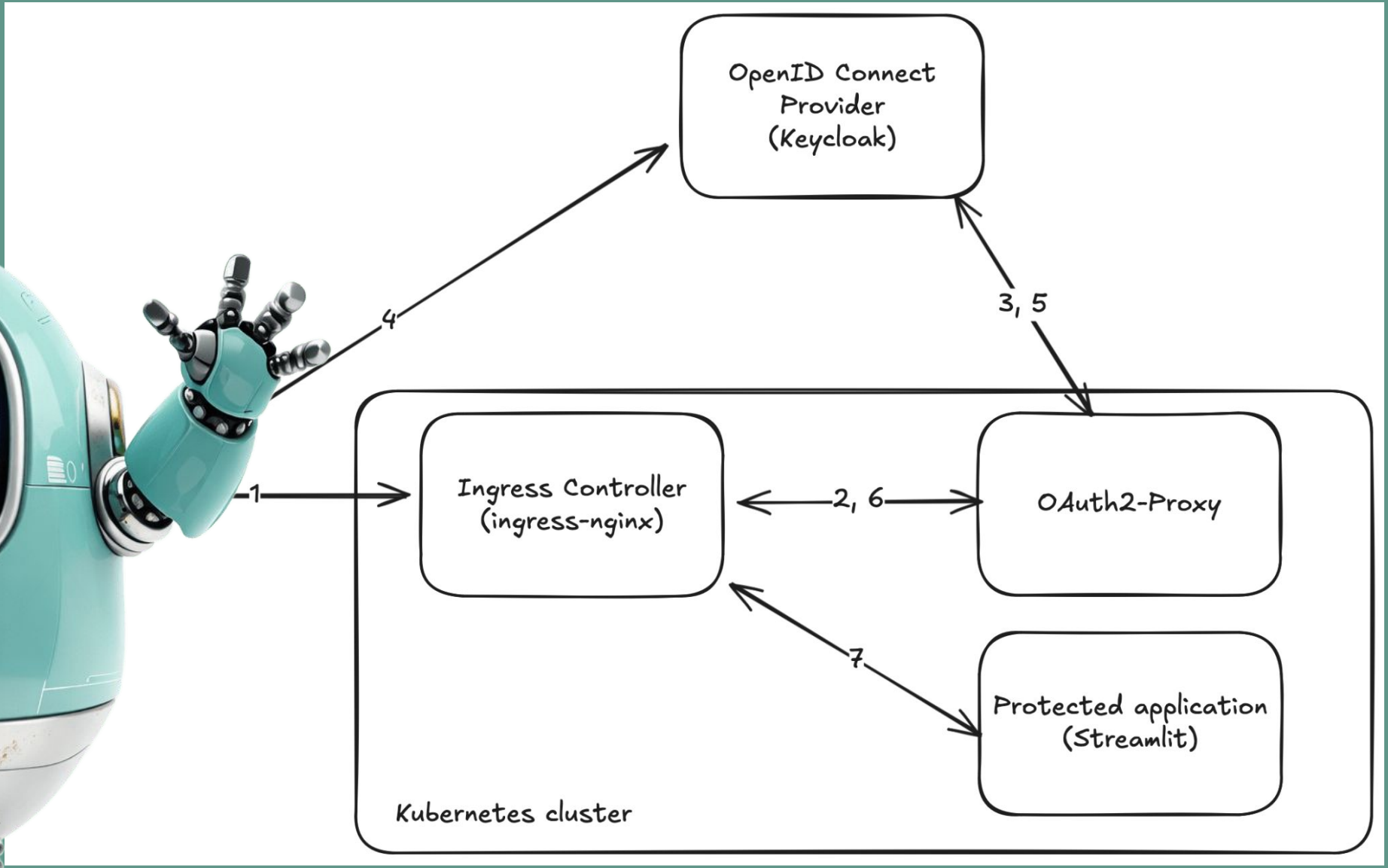
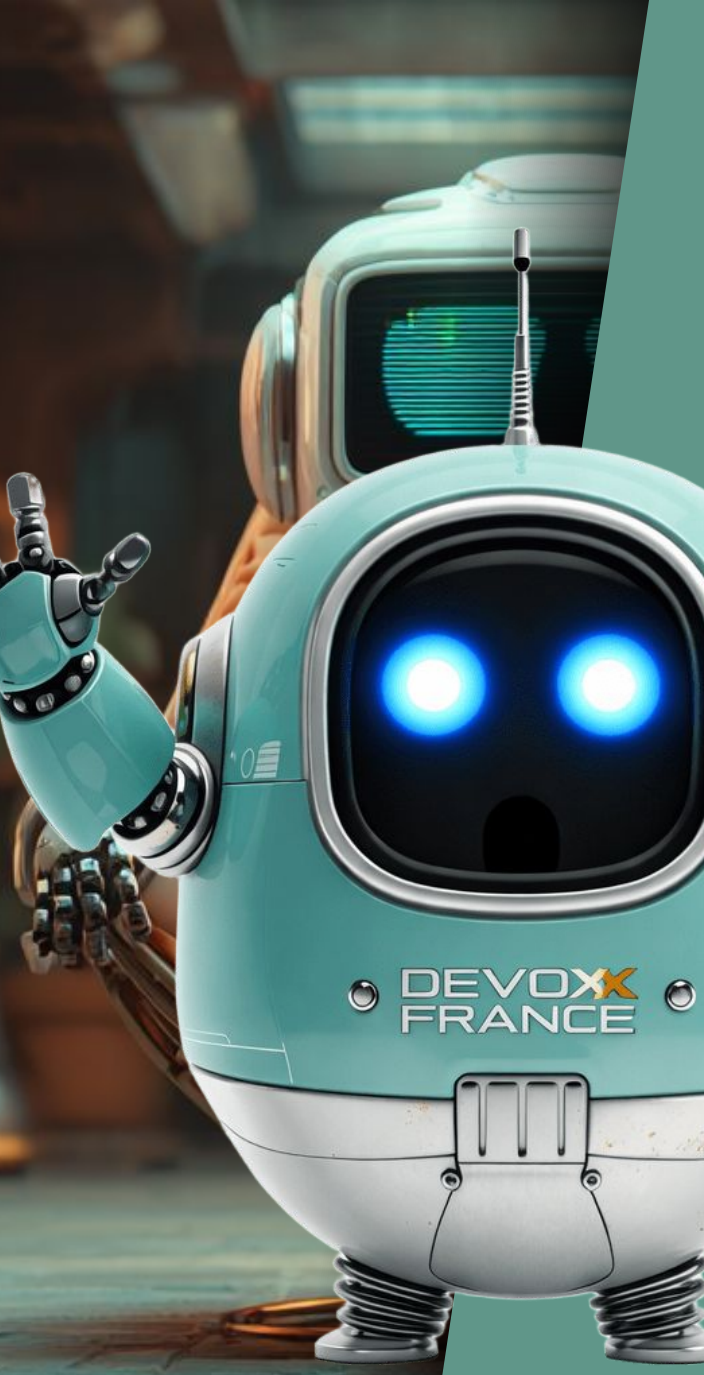
```
    nginx.ingress.kubernetes.io/ssl-redirect: "true"
```

```
    cert-manager.io/cluster-issuer: "selfsigned-issuer"
```

```
spec:
```

```
  ingressClassName: nginx
```

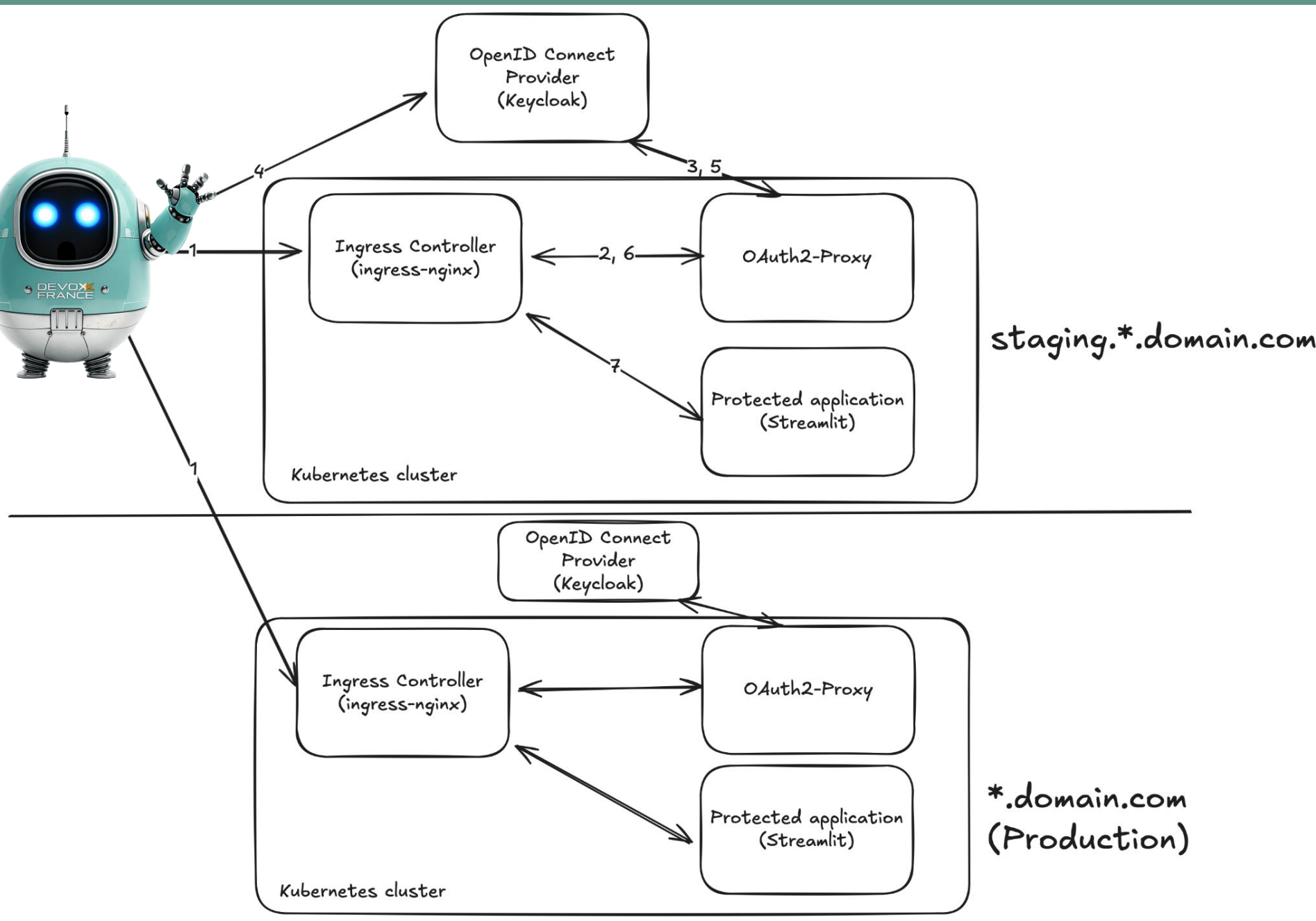
```
[...]
```



# Race condition



```
cookie_csrf_per_request = true  
cookie_csrf_expire = "5m"
```





# Un nouveau domaine ou de la config. ?



Staging	Production
<code>cookie_domains = [ ".staging.127.0.0.1.nip.io" ]</code>	<code>".127.0.0.1.nip.io"</code>
<code>cookie_name = "_oauth2_proxy_staging"</code>	<code>"_oauth2_proxy_prod"</code>
<code>cookie_secret différent</code>	
<code>Cpdt: Cookie de PRD -&gt; STG</code>	



# OAUTH 2, déjà une "tech" ubiquitaire



We will take you to your default web browser to sign in and bring you back when it's complete...

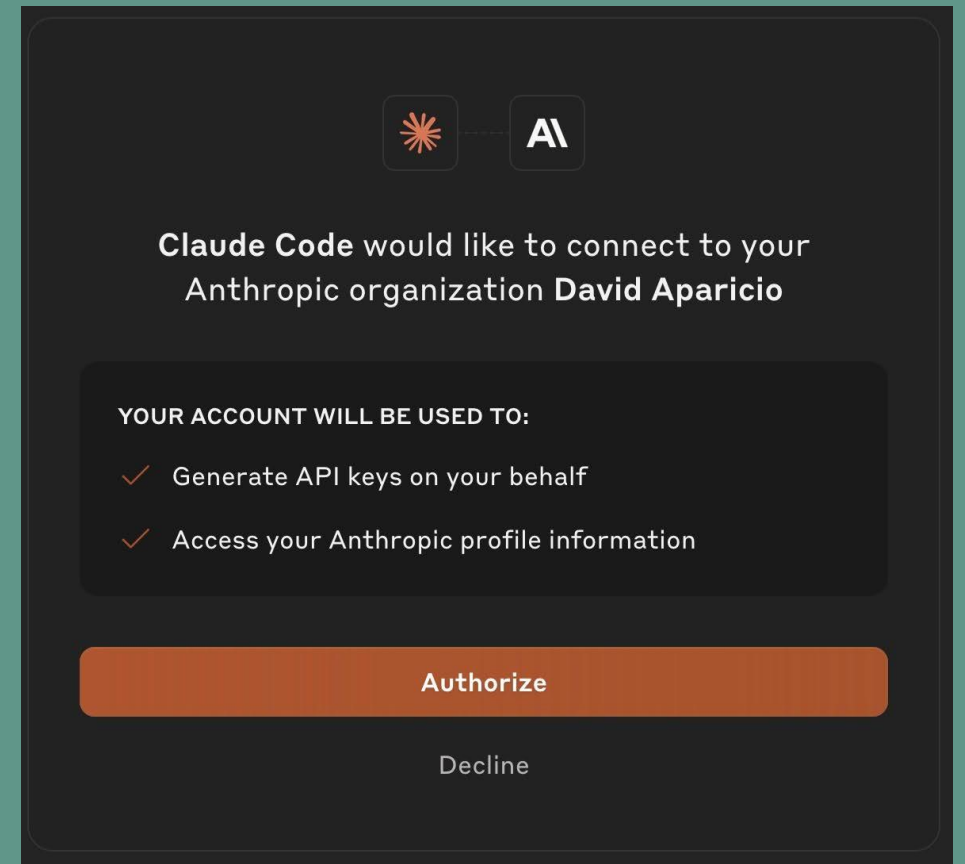
Or open this link in your browser:

```
https://app.kiro.dev/signin?state=2c6491f4-a0e2-440e-9fb5-737d2d4b5787&code_challenge=_IH99ym1ojlKKqrtKPM122ZVbvsfPeH5dlQz2AAlp6w&code_challenge_method=S256&redirect_uri=http%3A%2F%2Flocalhost%3A3128&redirect_from=KiroIDE
```

Cancel

By signing in, you agree to the [AWS Customer Agreement](#), [Service Terms](#), and [Privacy Notice](#).

# OAUTH 2, déjà une "tech" ubiquitaire



# OAUTH 2 un standard de l'industrie

oauth2.creditmutuel.fr/fr/logon.html

## Connexion



Crédit Mutuel

**Identifiant / Mot de passe** Certificat Électronique SAFETRANS

Identifiant

Mot de passe

[Retour](#)

[Se connecter](#)

iam.esalia.com/connect/XUI?realm=sg\_ws&locale=fr&goto=https://iam.esalia.com:443/connect/oauth2/authorize?response\_type%3Dcode%26client\_id%3D6

SOCIÉTÉ GÉNÉRALE

CHANGER DE LANGUE AIDE À LA CONNEXION

## CONNEXION À VOTRE COMPTE ÉPARGNE SALARIALE ET RETRAITE

Numéro de compte

Oublié ?



Mémoriser mon numéro de compte

Mot de passe

Oublié ?

Saisissez votre mot de passe

6

7

4

3

2

1

8

9

5

0

Effacer

[Se connecter](#)

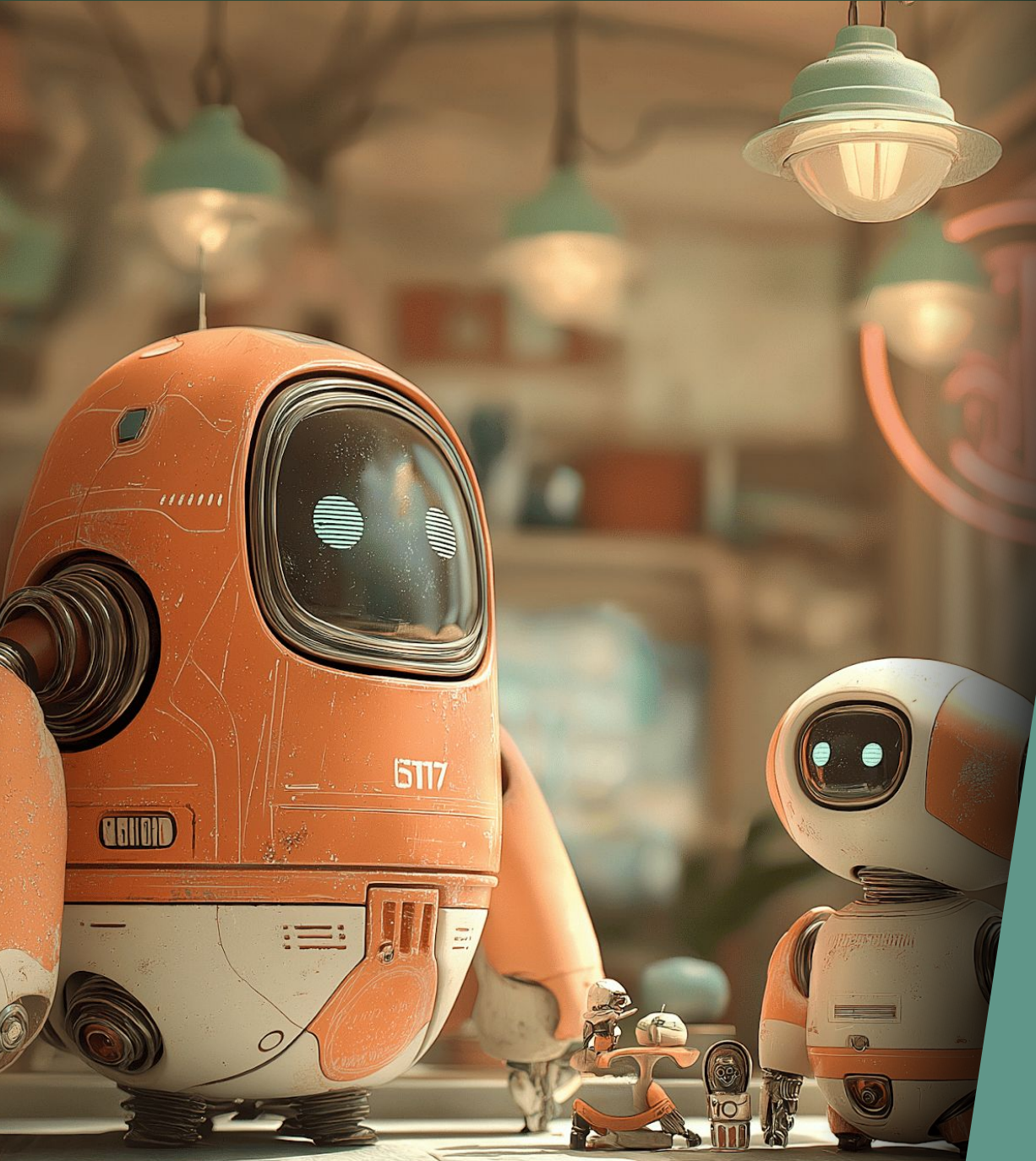
**Bienvenue sur Esalia**  
Vivez différemment l'épargne salariale et retraite



Vous souhaitez gérer votre épargne où que vous soyez ?

**Téléchargez l'Appli Esalia !**





## Avantages

- Rapide à mettre en place
- Simple à utiliser (annotations)
  - Mais pas d'équivalent Gateway API [gep-1494](#)
- Transparent pour les développeurs
- Automatique avec une policy Kyverno



[github.com/davidaparcio/devoxxfr26-oauth2](https://github.com/davidaparcio/devoxxfr26-oauth2)



Anubis

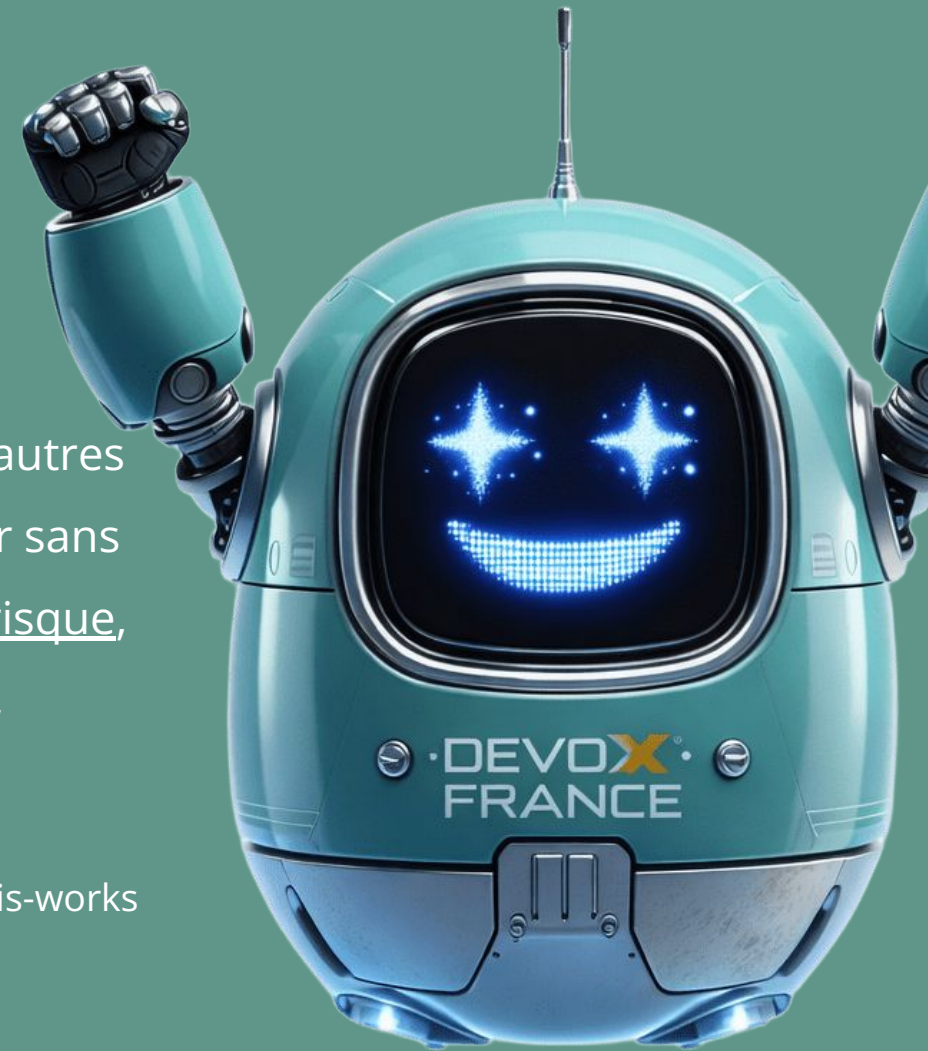
Laissez les agents AI loin de votre site

Et faites des réductions FinOps, au passage

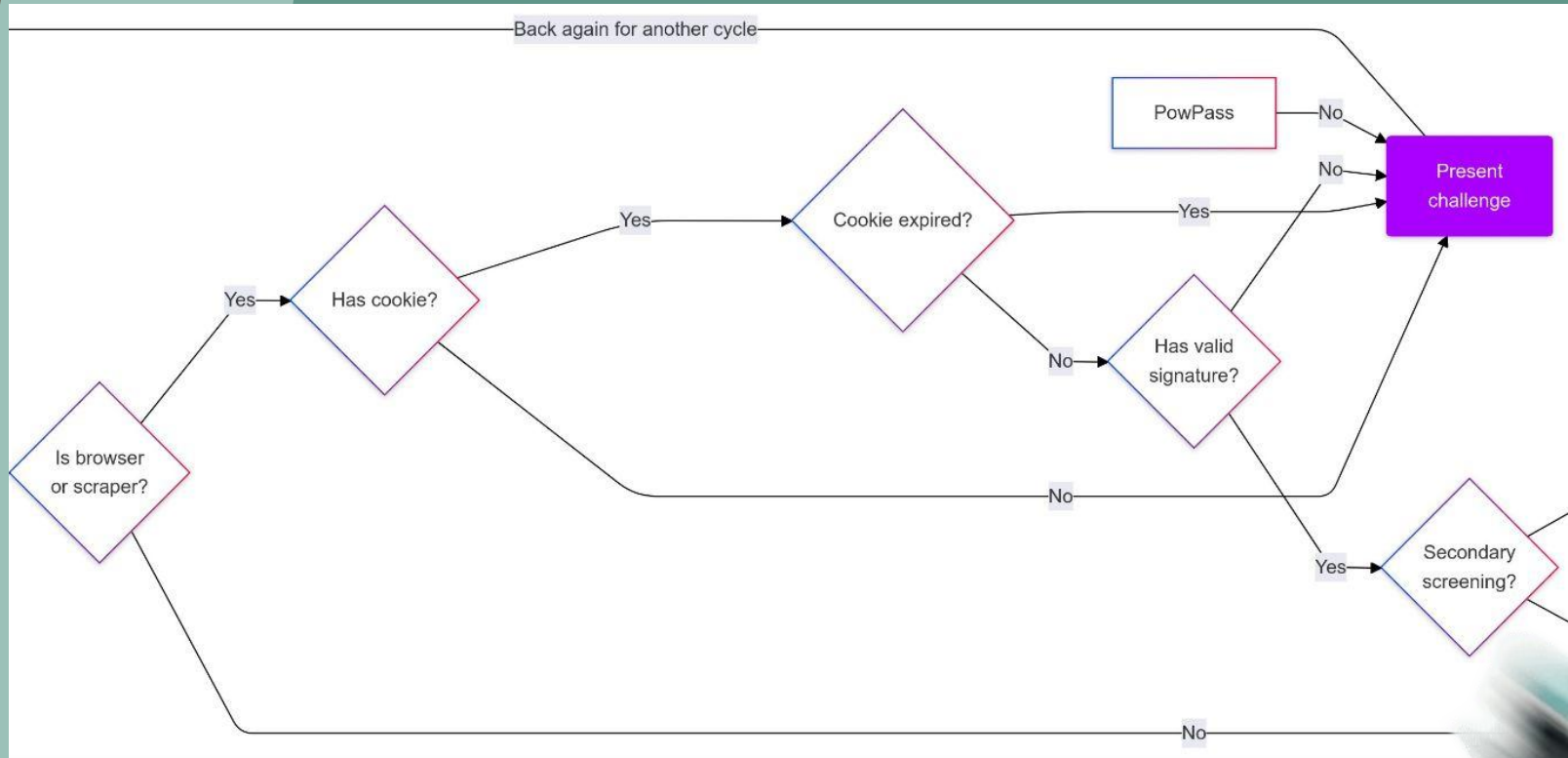


**Anubis** permet aux lecteurs RSS et aux autres clients à faible risque (type git) de passer sans problème, tandis que les clients à haut risque, tels que les navigateurs et "scrapper IA", seront bloqués, par un challenge PoW.

<https://anubis.techaro.lol/docs/design/how-anubis-works>



PoW: Proof of Work, comme utilisé dans les cryptomonnaies



<https://xeiaso.net/blog/2025/anubis/>



# Making sure you're not a bot!



Loading...

Please wait a moment while we ensure the security of your connection.

Protected by [Anubis](#) From [Techaro](#). Made with ❤️ in 🇨🇦.

Mascot design by [CELPHASE](#).

This website is hosted by Techaro. If you have any complaints or notes about the service, please contact [support@techaro.lol](mailto:support@techaro.lol) and we will assist you as soon as possible. -- [Imprint](#)

This website is running Anubis version v1.25.0-37-g3a6e368.




## Comparison with Proprietary Alternatives

While many users default to enterprise giants for bot protection, Anubis fills a specific niche for those who want to avoid vendor lock-in or centralized points of failure.

Feature	Anubis	Cloudflare (Bot Management)	Akamai Bot Manager
Cost	Free / Open Source	High (Enterprise Tier)	Enterprise Pricing
Self-Hosted	✅ Yes	❌ No	❌ No
Philosophy	Protection for the Small Web	Enterprise Scale	Enterprise Scale
Weight	Extremely Lightweight	N/A (Cloud Managed)	N/A (Cloud Managed)
Transparency	Open Source Code	Black Box Algorithms	Black Box Algorithms
Setup Complexity	Simple Proxy	Complex Dashboard	Complex Enterprise Integration

<https://opensource.daily.blog/anubis-the-lightweight-web-ai-firewall-for-the-small-internet>



```
- name: allow-api-requests
```

```
  action: ALLOW
```

```
  expression:
```

```
  all:
```

```
    - "'Accept' in headers'
```

```
    - 'headers["Accept"] == "application/json"'
```

```
    - 'path.startsWith("/api/")'
```

```
- name: amazonbot
```

```
  user_agent_regex: Amazonbot
```

```
  action: DENY
```

DEMO TIME





### thresholds:

- name: minimal-suspicion

expression: weight <= 0

action: ALLOW

- name: mild-suspicion

expression:

all:

- weight > 0

- weight < 10

action: CHALLENGE

challenge:

algorithm: metarefresh

difficulty: 1

- name: browser-proof-of-work

expression:

all:

- weight >= 10

- weight < 20

action: CHALLENGE

challenge:

algorithm: fast

difficulty: 5

- name: extreme-suspicion

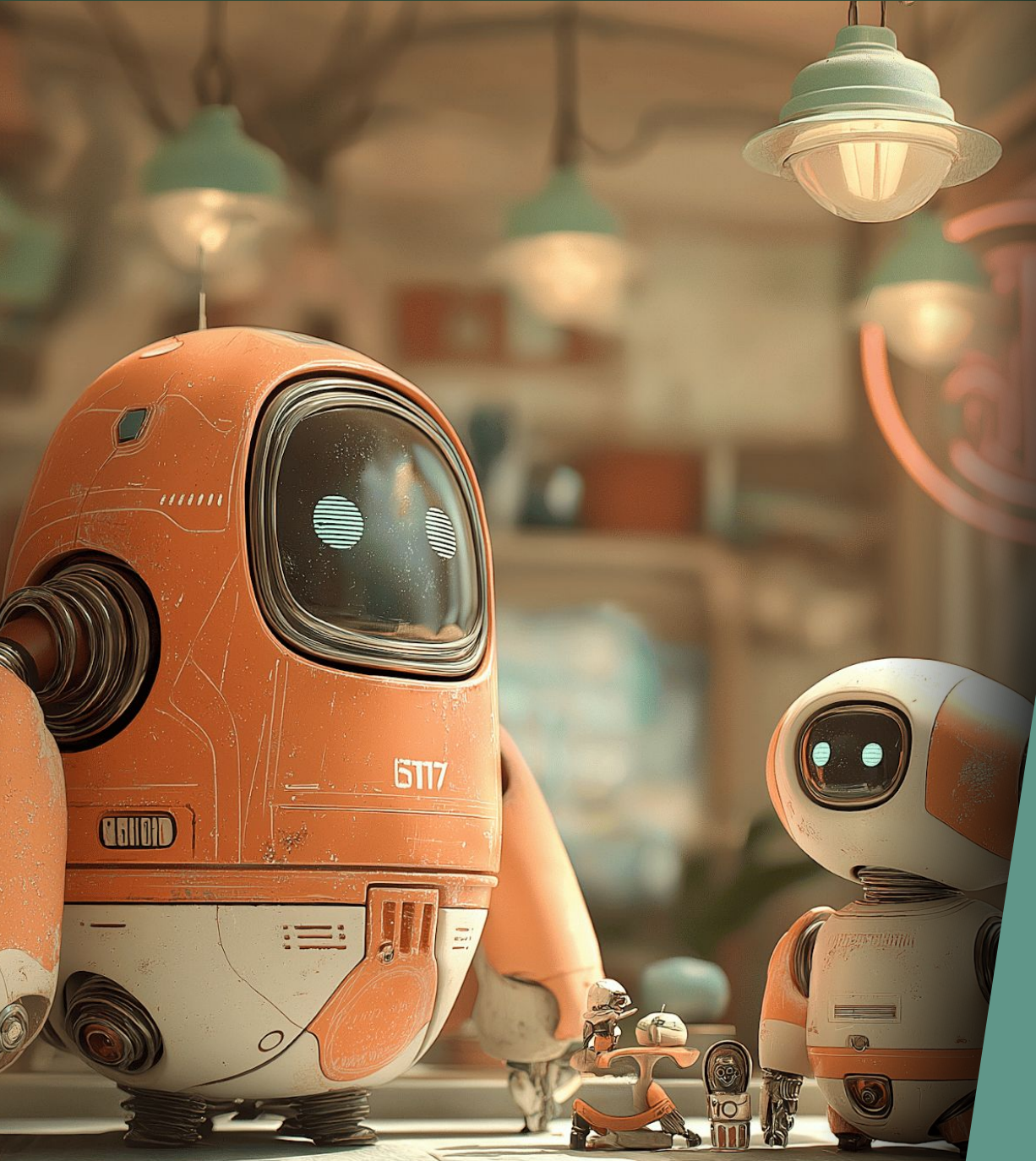
expression: weight >= 20

action: CHALLENGE

challenge:

algorithm: fast

difficulty: 7

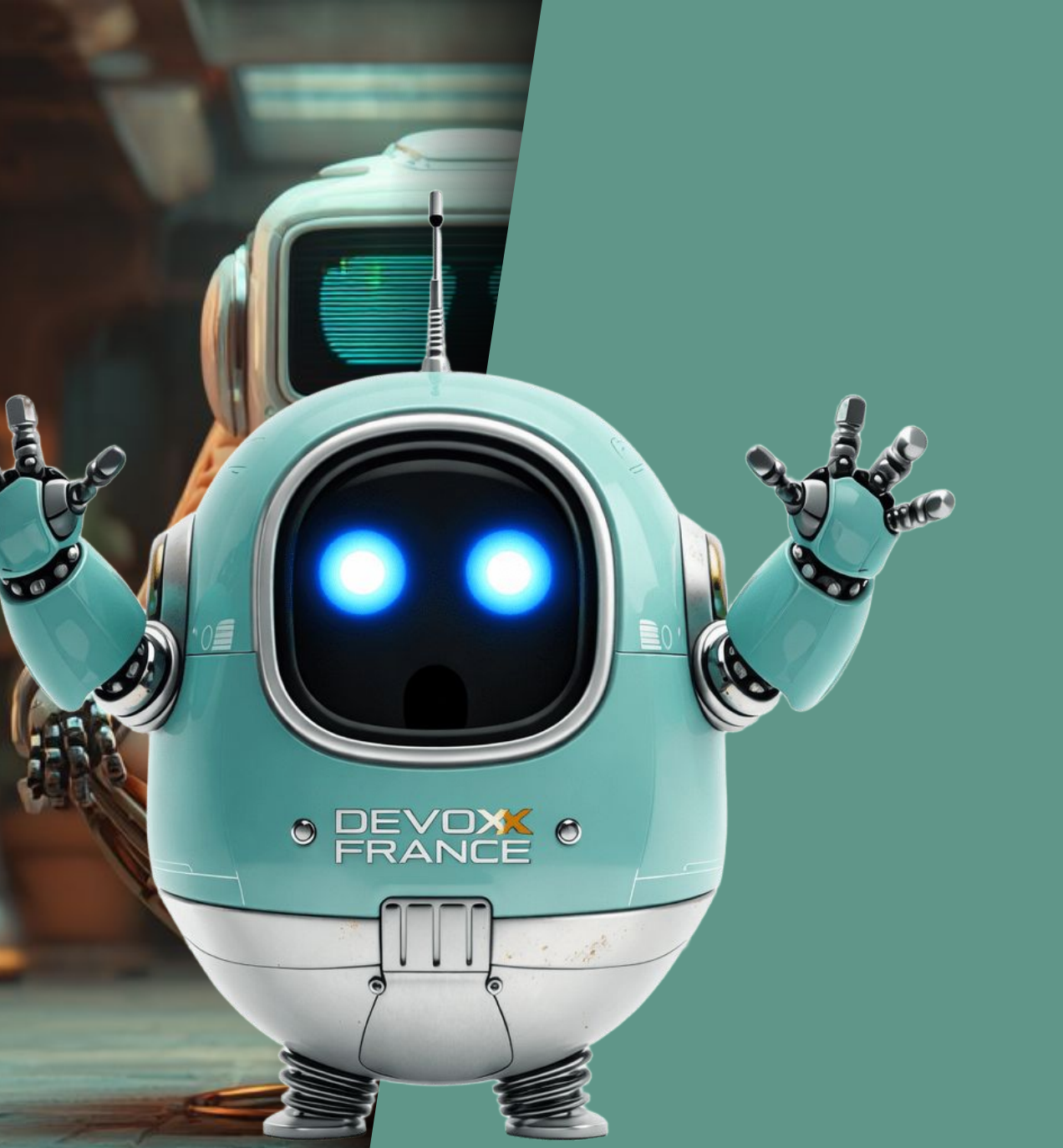


## Avantages

- Facile à mettre en place
- Robots.txt complet
- Écoconception (<128Mo RAM)
- Réduction des coûts (FinOps)
  - Impact important sur le GEO / SEO



[github.com/davidaparicio/devoxxfr26-anubis](https://github.com/davidaparicio/devoxxfr26-anubis)



DEVOPS · CYBER · SOUVERAINETÉ

# SYSOPS

LINUX **PRATIQUE**

SERVEURS · OPEN SOURCE · CLOUD

MAI / JUIN 2026

FRANCE MÉTRO : 9,90 € BELUX : 10,90 € CH : 15,80 CHF  
ESP/IT/PORT-CONT : 10,90 € DOM/S : 10,90 €  
TUN : 23 TND MAR : 110 MAD CAN : 17,99 CAD

N°155

L 18864 - 155 - F: 9,90 € - RD



CPAP - K78590

## K8S / STOCKAGE DISTRIBUÉ

Longhorn : une solution simple de stockage redondant pour votre cluster Kubernetes p. 68

## RÉSEAU / SDN / VRF

Introduction au Virtual Routing and Forwarding pour segmenter un routage en domaines étanches p. 56

## DEVSECOPS / CI/CD

Repensez l'architecture de votre usine logicielle en créant un « hub » de sécurité p. 48

## WEB SCRAPING / HAPROXY

Pesez l'âme des requêtes web entrantes pour éviter la surcharge de vos serveurs :

# DÉBARRASSEZ-VOUS DES BOTS IA AVEC ANUBIS !

p. 42

- Présentation & fonctionnement des outils utilisés
- Configuration d'Anubis & de HAProxy
- Définition des critères & des règles

## NOUVELLE RUBRIQUE : IA & AGENTS



### LLM / TECHNO

IA, entre promesses et réalité : quels usages concrets pour les Ops ? p. 08



### PUPPET / ANSIBLE

Automatisation : penser son infrastructure avant de choisir ses outils p. 18



### SYSTEMD / GREEN IT

Réalisez des économies : démarrez vos serveurs et VM à la demande p. 30

CONNECTED-DIAMOND.COM

# DEMO TIME

OAuth2 Proxy

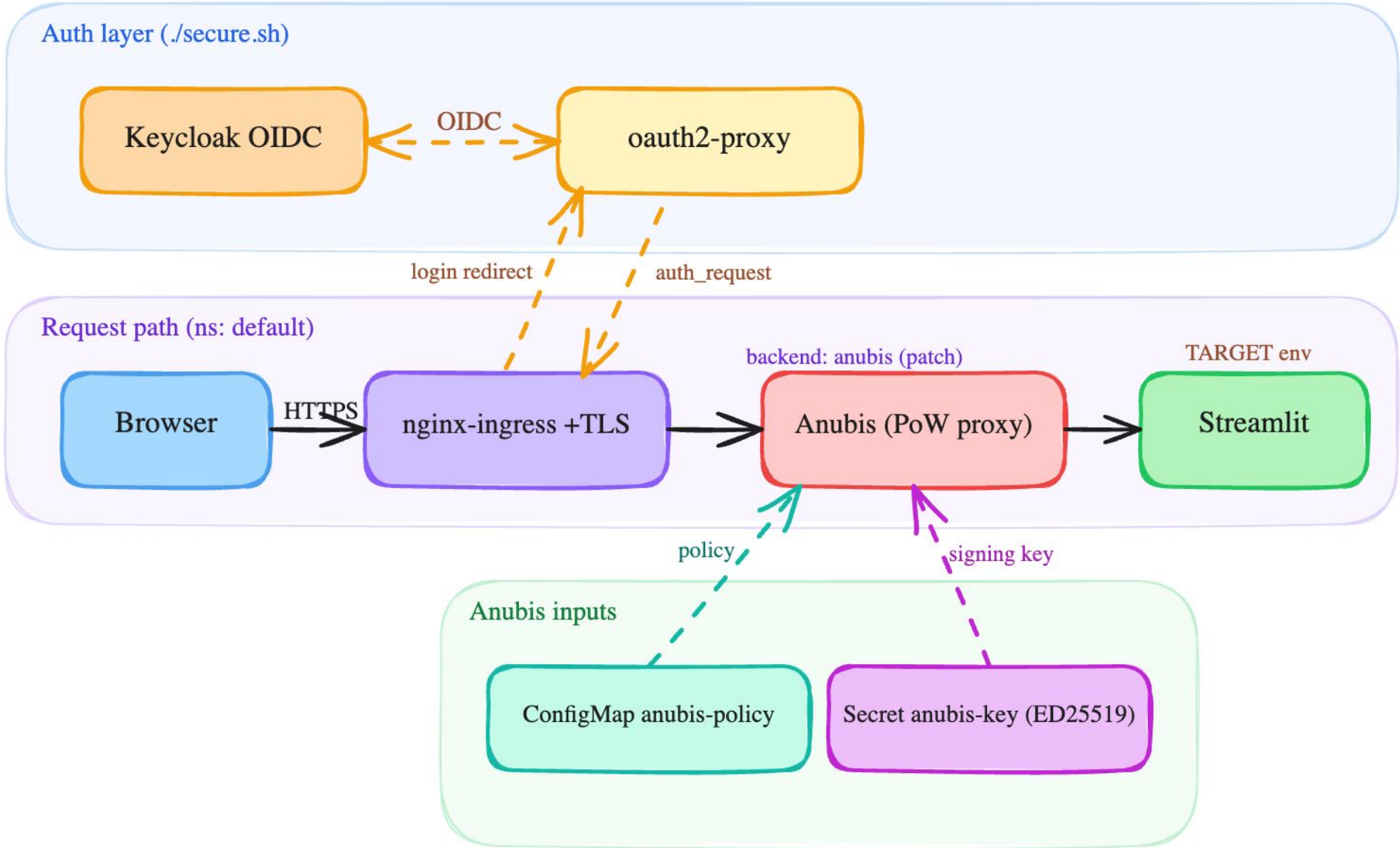


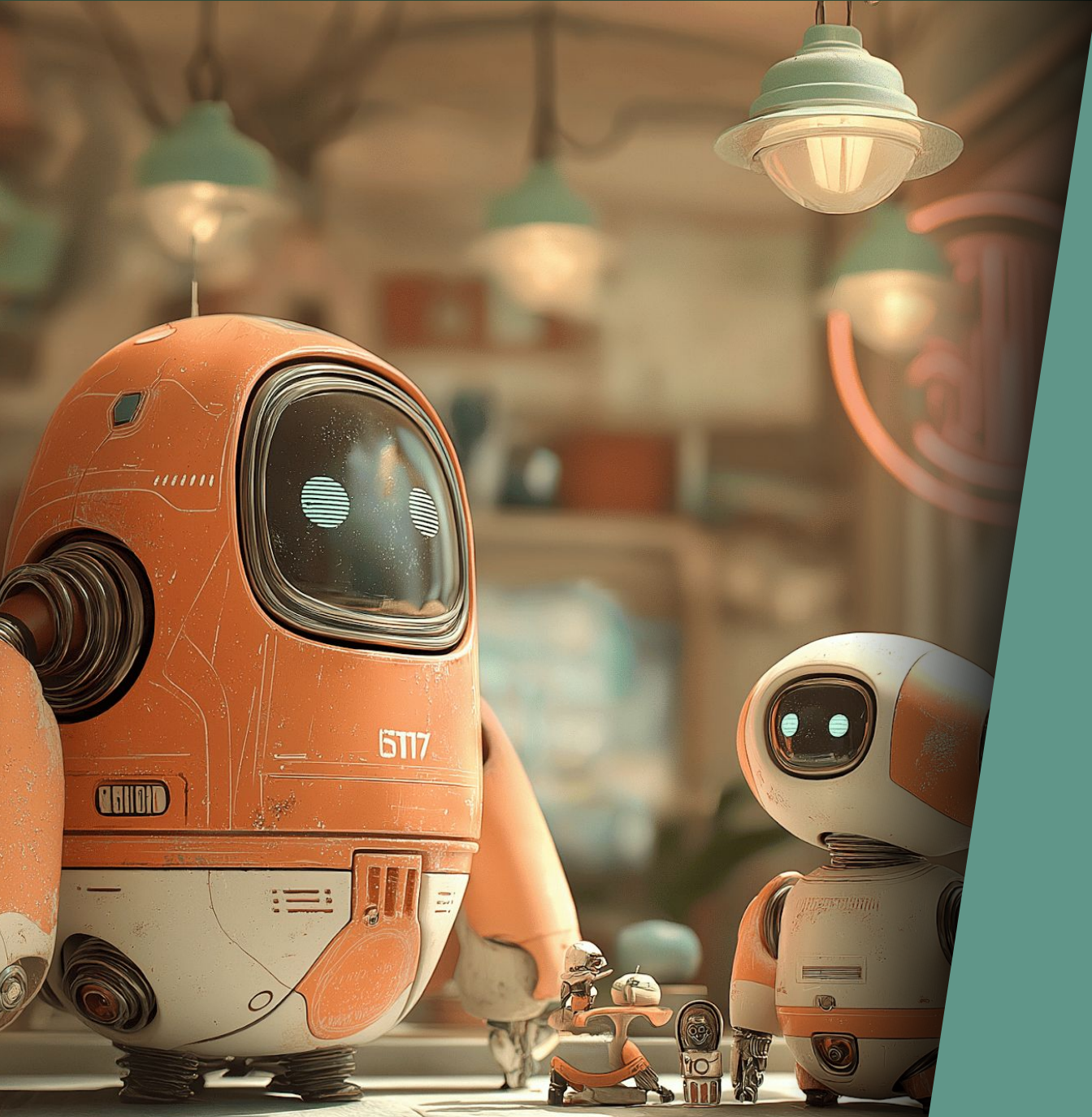
KEYCLOAK



# Streamlit runtime architecture

Ingress -> oauth2-proxy (auth) -> Anubis (PoW) -> Streamlit





## Conclusion: OAuth2-Proxy / Anubis

- Simplicité et Rapidité
- Écoconception
- Inconvénients à étudier au cas par cas



# David Aparicio

15/ DD INSA de Lyon / UNICAMP (Brésil)  
Facebook Open Academy / MIT AppInventor

17/ Dev(Sec)Ops @ AMADEUS (Nice, 2 ans)

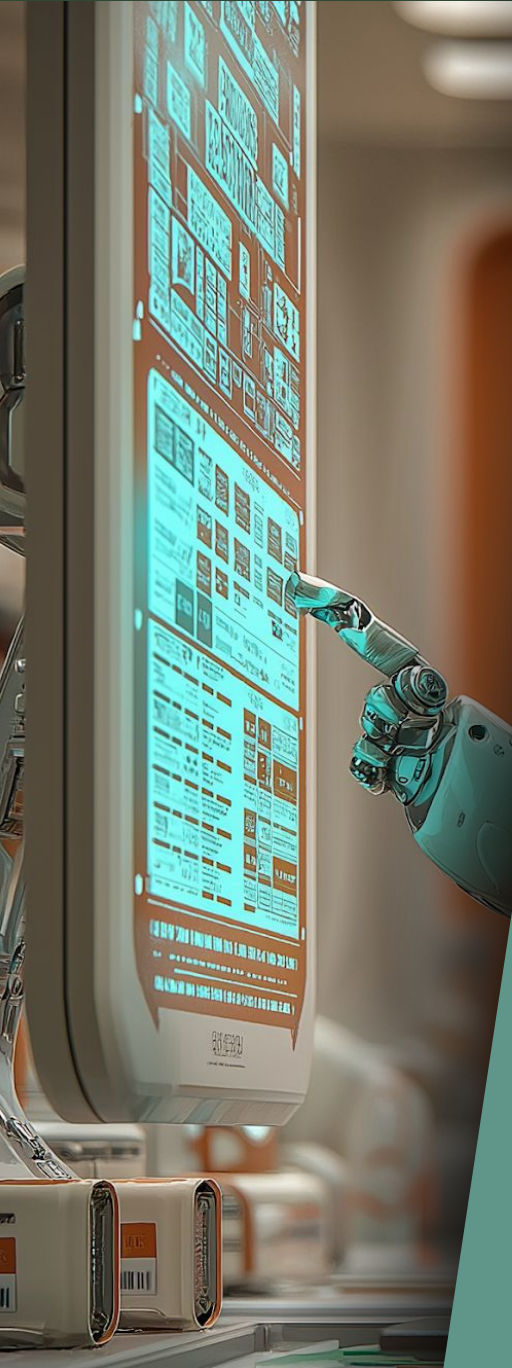
19/ Data(Sec)Ops @ OVHcloud (Lyon, 5 ans)

24/ Senior Dev(Sec)Ops @ Sopht (Lyon, 1 an)

25/ Senior SRE @ Agicap (Lyon, 2 mois)

26/ Senior DevOps @ Eudonet (Lyon, 3 mois)

[david.aparicio.eu](http://david.aparicio.eu) / @ davidaparicio / @ dadideo



« Après 8 heures d'opération avec Eudonet, j'étais déjà plus efficace qu'après 8 ans avec mon ancien CRM. »

Jean Lamoureux, Directeur général, Fondation de l'Hôtel-Dieu d'Alma.



# Migrer vos données pour gagner en efficacité

Le cas Fondation Hôtel-Dieu D'Alma



## CONTEXTE

15 000

DONATEURS DANS LEUR BDD

+/- 8000

ENTRÉES TRAITÉES PAR AN

### MAIS :

- Données dispersées
- Manque de suivi centralisé
- Environnement applicatif trop large

Centraliser l'information et l'historique des donateurs

## UNE SOLUTION FLUIDE

### Migration CRM fluide

Intégration complète des donateurs, campagnes et reçus.



“ L'équipe a rapidement pris le virage d'expertise et de détail, tout en nous simplifiant grandement la démarche. ”



JEAN LAMOUREUX  
Directeur général FHDA

## BÉNÉFICES



~300 heures libérées par an



Meilleure gestion des données



Passage à la vitesse supérieure

Prêt à migrer votre CRM avec confiance ?

Échangeons ensemble



"Agir avec raison dans l'incertain", Laurence Devillers

MERCI BEAUCOUP POUR  
VOTRE ATTENTION AINSI QUE  
POUR VOTRE FEEDBACK

Merci aussi aux sponsors, bénévoles et organisateurs :) The background image shows a group of four cute, stylized robots in a kitchen. On the left is a large orange robot with a white chest and a small orange egg-shaped robot next to it. In the center is a small white robot with orange accents and a thin antenna. On the right is a large light blue robot with a white chest and a small blue egg-shaped robot next to it. The kitchen has a tiled floor, potted plants, and a window in the background.



QUESTIONS ?

